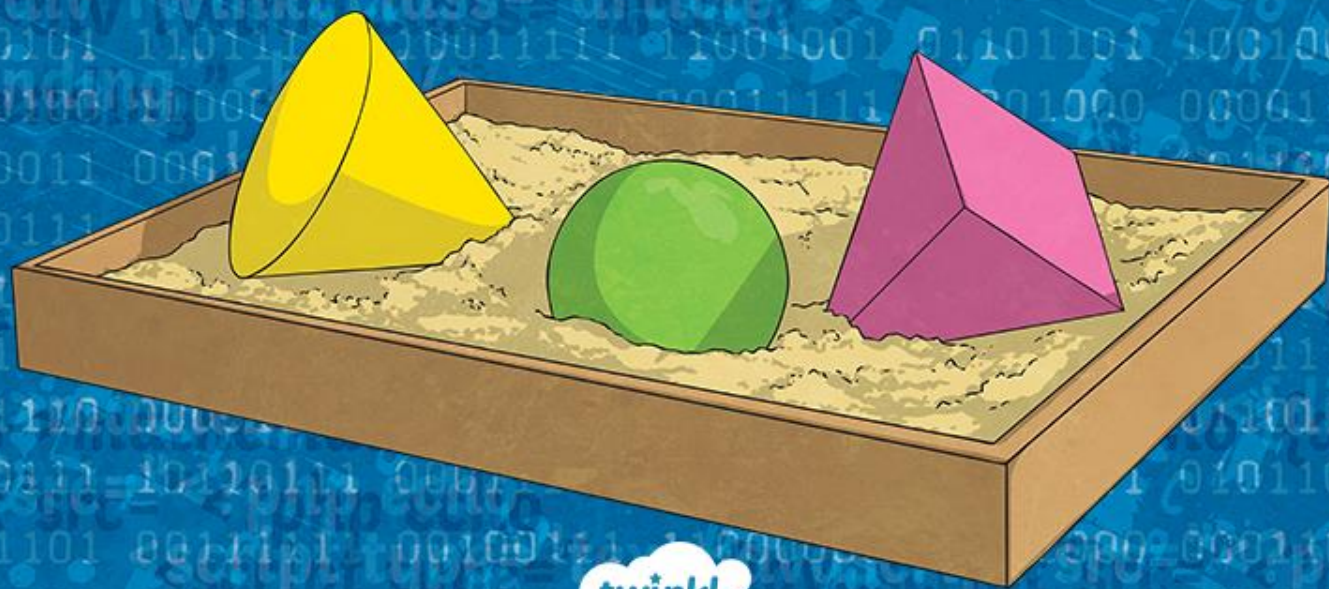


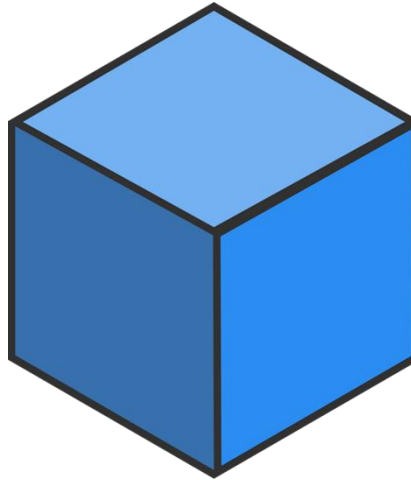
3D Shapes True or False?



twinkl



Which statement is **false**?



A

It is a cube

B

It has 5 faces

C

Its faces are squares



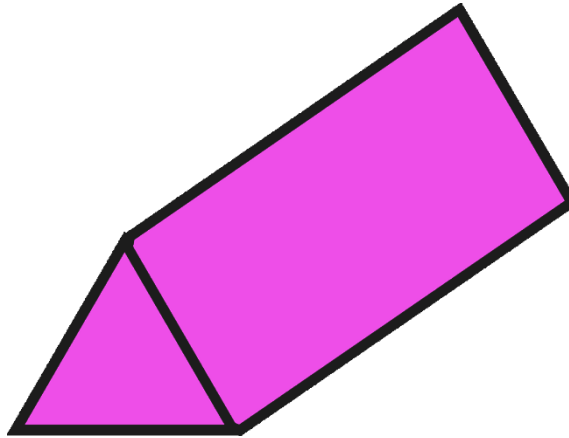
Oh no!
Try again



Correct!
Well Done!



Which statement is **true**?



A

It is a prism

B

It has 7 vertices

C

It has 6 faces



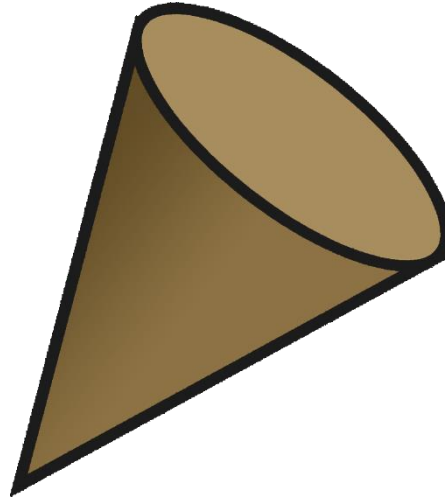
Oh no!
Try again



Correct!
Well Done!



Which statement is **true**?



- A It is a cone
- B It has 2 vertices
- C It has 3 faces



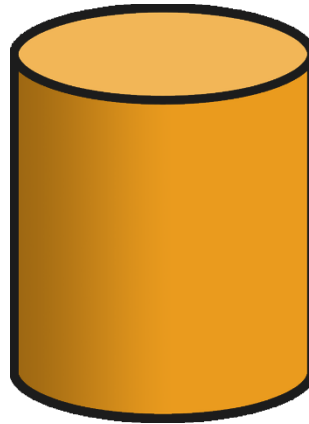
Oh no!
Try again



Correct!
Well Done!



Which statement is **true**?



A It has 2 faces

B It has 3 vertices

C It is a cylinder



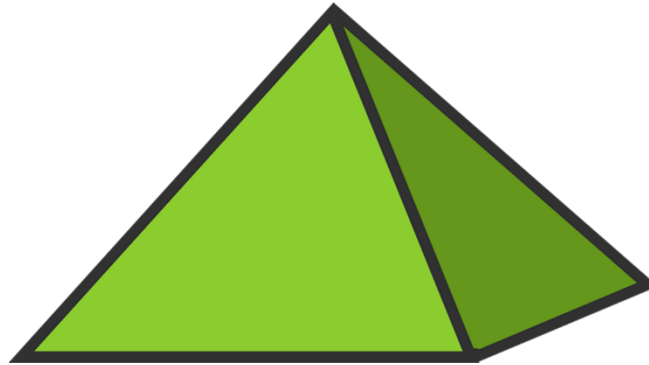
Oh no!
Try again



Correct!
Well Done!



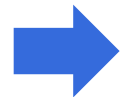
Which statement is **false**?



A It has a square base

B It is a pyramid

C It has 7 edges



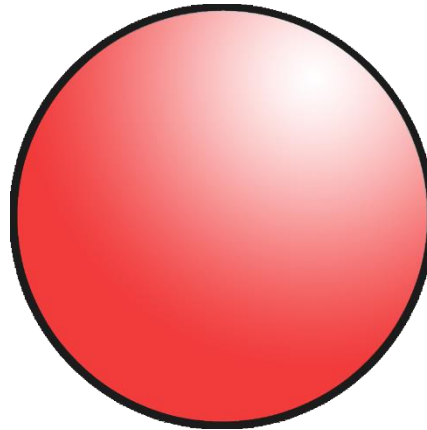
Oh no!
Try again



Correct!
Well Done!



Which statement is **true**?



A It has 0 faces

B It has 1 vertices

C It has 0 edges



Oh no!
Try again



Correct!
Well Done!



Which statement is **false**?



A

It is a cube

B

It has 6 faces

C

It has 8 vertices



Oh no!
Try again



Correct!
Well Done!



twinkl